

## Test Report



Report No. A2240248849101006

Company Name SHENZHEN JDB TECHNOLOGY CO., LTD.  
shown on Report

Address 301, BUILDING 32, LONGWANGMIAO INDUSTRIAL ZONE, BAISHIXIA COMMUNITY,  
FUYONG STREET, BAO'AN DISTRICT, SHENZHEN CITY

The following sample(s) and sample information was/were submitted and identified by/on the behalf of the applicant

Sample Name Aluminum based OSP  
Sample Received Date May 7, 2024  
Testing Period May 7, 2024 to May 10, 2024

Test Requested As specified by client, to test Lead (Pb), Cadmium (Cd), Mercury (Hg), Hexavalent Chromium (Cr(VI)), Polybrominated Biphenyls (PBBs), Polybrominated Diphenyl Ethers (PBDEs), Phthalates (DBP, BBP, DEHP, DIBP) in the submitted sample(s).

Test Method Please refer to the following page(s).

Test Result(s) Please refer to the following page(s).

\*\*\*\*\*

### Conclusion

Tested Sample	According to standard/directive	Result
Submitted Sample	RoHS Directive 2011/65/EU with amendment (EU) 2015/863	PASS

\*\*\*\*\*

PASS means that the results shown on the report comply with the limits set by RoHS Directive 2011/65/EU with amendment (EU) 2015/863.



Approved by

Date

May 10, 2024

Hill Zheng

Technical Manager

No. R677501435

CTI Testing International Group Co., Ltd.

CTI Building, Xing Dong Community, Xin'an Sub-district, Bao'an District, Shenzhen City, Guangdong Province, P.R. China

# Test Report

Report No. A2240248849101006

Page 2 of 7

**Test Method**

Test Item(s)	Test Method	Measured Equipment(s)
Lead (Pb)	IEC 62321-5:2013	ICP-OES
Cadmium (Cd)	IEC 62321-5:2013	ICP-OES
Mercury (Hg)	IEC 62321-4:2013+AMD1:2017 CSV	ICP-OES
Hexavalent Chromium (Cr(VI))	IEC 62321-7-2:2017 and/or determination of Total Chromium by IEC 62321-5:2013	UV-Vis/ICP-OES
Polybrominated Biphenyls (PBBs)	IEC 62321-6:2015	GC-MS
Polybrominated Diphenyl Ethers (PBDEs)	IEC 62321-6:2015	GC-MS
Phthalates (DBP, BBP, DEHP, DIBP)	IEC 62321-8:2017	GC-MS

# Test Report

Report No. A2240248849101006

Page 3 of 7

**Test Result(s)**

Tested Item(s)	Result	MDL	Limit
	006		
Lead (Pb)	N.D.	2 mg/kg	1000 mg/kg
Cadmium (Cd)	N.D.	2 mg/kg	100 mg/kg
Mercury (Hg)	N.D.	2 mg/kg	1000 mg/kg
Hexavalent Chromium (Cr(VI))	N.D.	8 mg/kg	1000 mg/kg
Tested Item(s)	Result	MDL	Limit
	006		
<b>Polybrominated Biphenyls (PBBs)</b>			
Monobromobiphenyl	N.D.	5 mg/kg	1000 mg/kg
Dibromobiphenyl	N.D.	5 mg/kg	
Tribromobiphenyl	N.D.	5 mg/kg	
Tetrabromobiphenyl	N.D.	5 mg/kg	
Pentabromobiphenyl	N.D.	5 mg/kg	
Hexabromobiphenyl	N.D.	5 mg/kg	
Heptabromobiphenyl	N.D.	5 mg/kg	
Octabromobiphenyl	N.D.	5 mg/kg	
Nonabromobiphenyl	N.D.	5 mg/kg	
Decabromobiphenyl	N.D.	5 mg/kg	
Tested Item(s)	Result	MDL	Limit
	006		
<b>Polybrominated Diphenyl Ethers (PBDEs)</b>			
Monobromodiphenyl ether	N.D.	5 mg/kg	1000 mg/kg
Dibromodiphenyl ether	N.D.	5 mg/kg	
Tribromodiphenyl ether	N.D.	5 mg/kg	
Tetrabromodiphenyl ether	N.D.	5 mg/kg	
Pentabromodiphenyl ether	N.D.	5 mg/kg	
Hexabromodiphenyl ether	N.D.	5 mg/kg	
Heptabromodiphenyl ether	N.D.	5 mg/kg	
Octabromodiphenyl ether	N.D.	5 mg/kg	
Nonabromodiphenyl ether	N.D.	5 mg/kg	
Decabromodiphenyl ether	N.D.	5 mg/kg	

# Test Report

Report No. A2240248849101006

Page 4 of 7

**Test Result(s)**

Tested Item(s)	Result	MDL	Limit
	006		
<b>Phthalates (DBP, BBP, DEHP, DIBP)</b>			
Dibutyl phthalate (DBP) CAS#:84-74-2	N.D.	50 mg/kg	1000 mg/kg
Butyl benzyl phthalate (BBP) CAS#:85-68-7	N.D.	50 mg/kg	1000 mg/kg
Di-(2-ethylhexyl) phthalate (DEHP) CAS#:117-81-7	N.D.	50 mg/kg	1000 mg/kg
Diisobutyl phthalate (DIBP) CAS#:84-69-5	N.D.	50 mg/kg	1000 mg/kg

**Sample/Part Description**

No.	CTI Sample ID	Description
1	006	MCPCB(Tested as a whole)

**Remark:**

- The sample(s) had been dissolved totally tested for Lead, Cadmium, Mercury.
- The sample(s) was tested as a whole, because it's impossible to disassemble or separate it by current equipment and technology. The result(s) shown on this report may be different from the content of any homogeneous material.
- MDL = Method Detection Limit
- N.D. = Not Detected (<MDL )
- mg/kg = ppm = parts per million
- 1000 mg/kg = 0.1%

股份  
 有限公司  
 目  
 服务

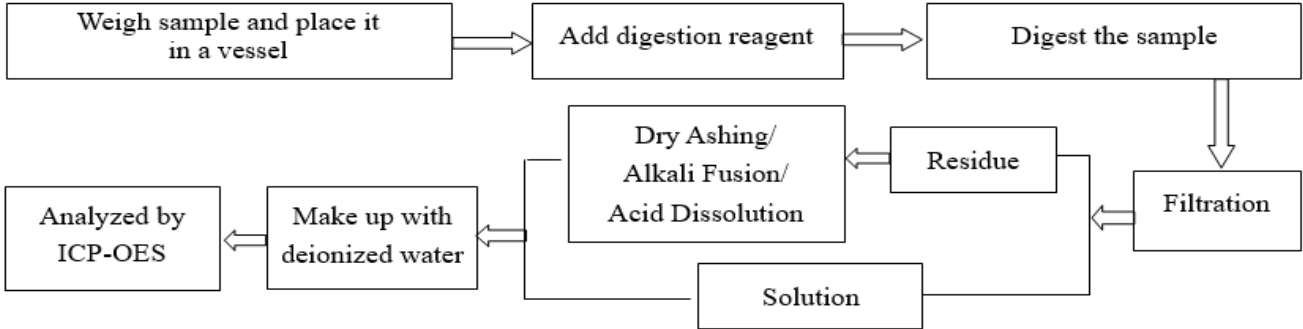
# Test Report

Report No. A2240248849101006

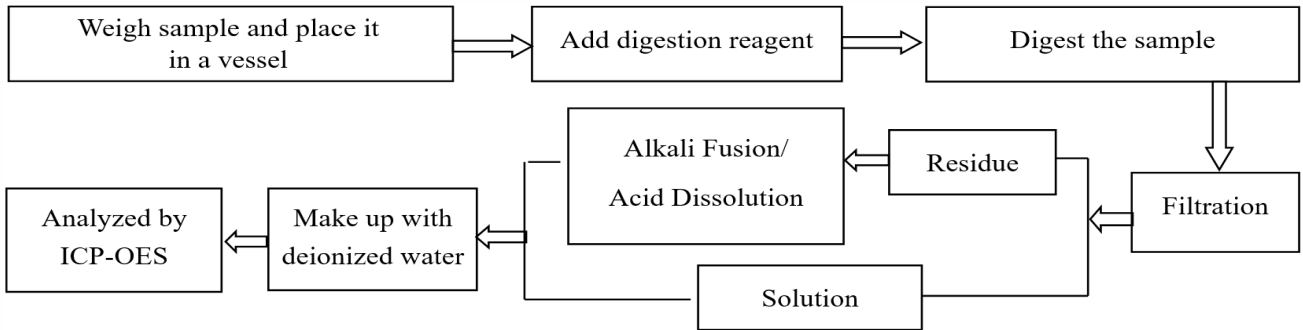
Page 5 of 7

**Test Process**

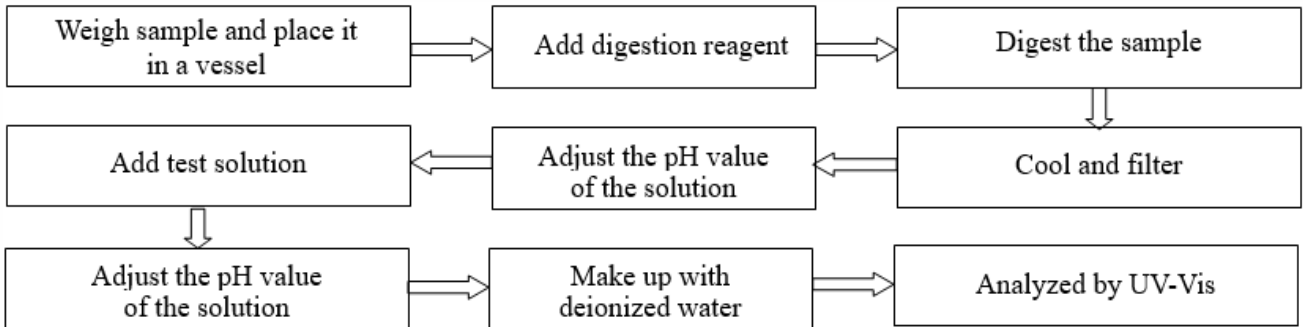
**1. Lead (Pb), Cadmium (Cd), Chromium (Cr)**



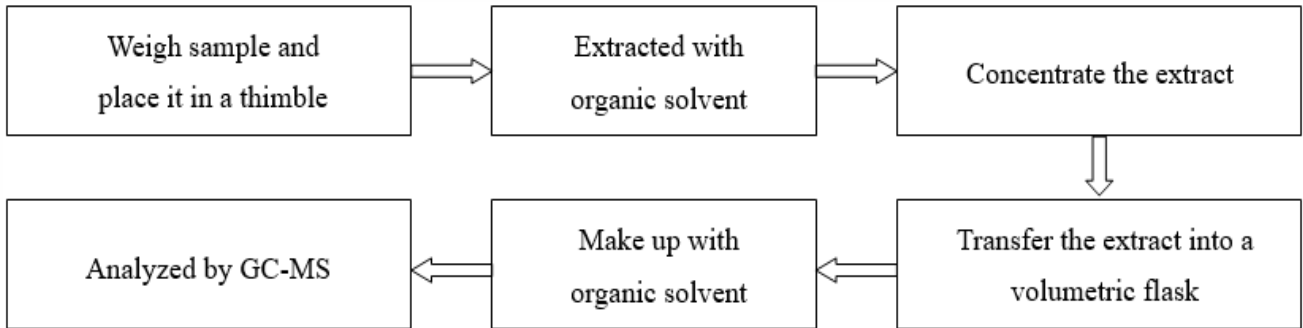
**2. Mercury (Hg)**



**3. Hexavalent Chromium (Cr(VI))**



**4. Polybrominated Biphenyls (PBBs), Polybrominated Diphenyl Ethers (PBDEs)**

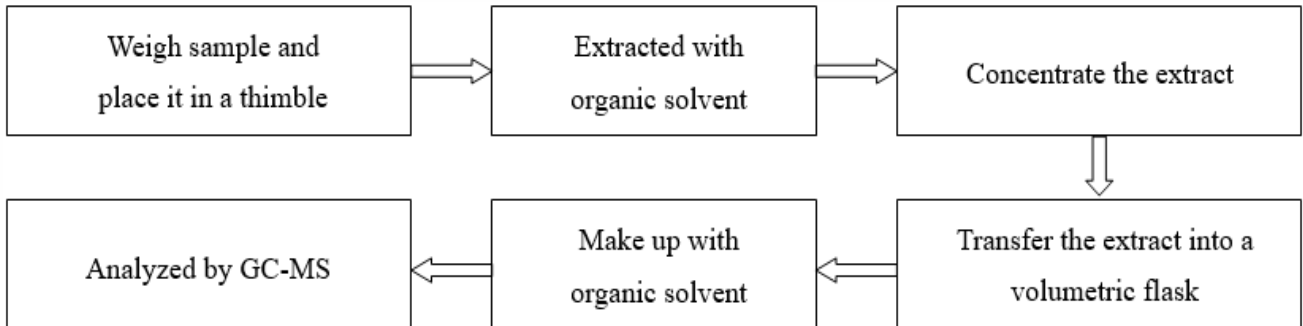


# Test Report

Report No. A2240248849101006

Page 6 of 7

## 5. Phthalates (DBP, BBP, DEHP, DIBP)



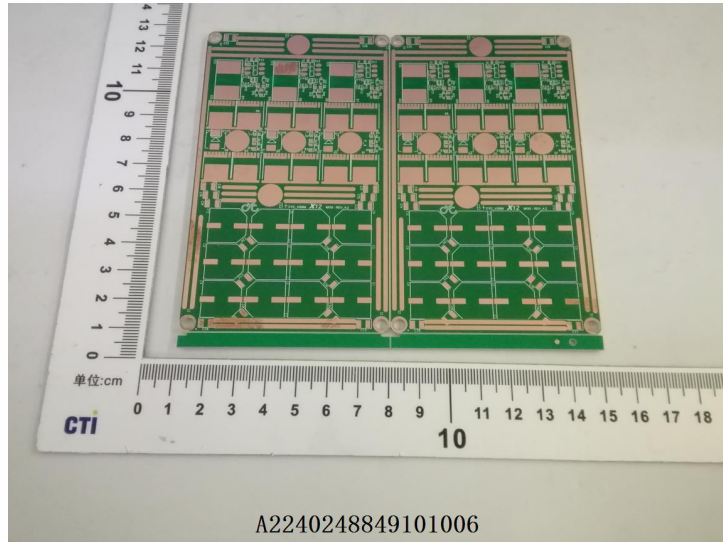
华测检测有限公司

# Test Report

Report No. A2240248849101006

Page 7 of 7

## Photo(s) of the sample(s)



### Statement:

1. This report is considered invalid without approved signature, special seal and the seal on the perforation;
2. The Company Name shown on Report and Address, the sample(s) and sample information was/were provided by the applicant who should be responsible for the authenticity which CTI hasn't verified;
3. The result(s) shown in this report refer(s) only to the sample(s) tested;
4. Unless otherwise stated, the decision rule for conformity reporting is based on Binary Statement for Simple Acceptance Rule (w=0) stated in ILAC-G8:09/2019 / CNAS-GL015:2022;
5. Without written approval of CTI, this report can't be reproduced except in full;
6. In case of any discrepancy between the English version and Chinese version of the testing reports (if generated), the Chinese version shall prevail.

\*\*\* End of report \*\*\*